

FuelTech

Turbo Speed Sensor

#0320

Electrical Connection

Pin 1 - 5V Supply

Pin 2 - Ground (- BAT)

Pin 3 - Signal (white wire from FT)

Installation procedure

1. Remove the compressor housing from the turbo.
2. If the compressor housing doesn't already have a hole and a thread for the sensor, it must be made as shown in figure (a).
3. The thread pattern is M6 x 0.5mm
4. Install the sensor.
5. Assemble the compressor housing back.
6. Screw the sensor in until the top is aligned to the housing as shown in figure (b). The recommended distance between the sensor and the blades is **0.8mm**.

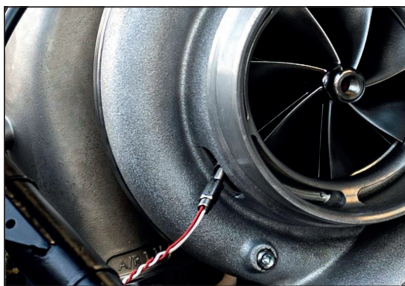


Figure (a)

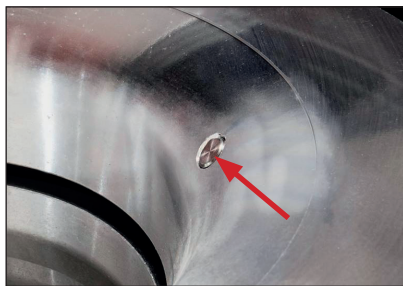


Figure (b)



All products manufactured by FUELTECH are warranted to be free from defects in material and workmanship for 90 days following the date of original purchase.

Configuration

1. At FTManager go to the menu “*Sensors and Calibration* / *Inputs*” select the white input and set it as Turbo speed RPM 1 or 2.

2. Still in “*Sensors and Calibration*”, access the option “*Turbo speed RPM*” and set the parameters:

- a) Internal sensor signal divider: 8 (standard value for this sensor).
- b) Compressor blades count: Count the number of blades (full impeller and splitter blades) that the sensor will read and set it here.

Important Information

Warning: This sensor will start reading only when the compressor wheel speed reaches 5,000 RPM. If you spin the compressor wheel with your hand, the sensor will read 0 RPM.

Uses the FuelTech PN3024001939 connector.



Inputs 1

| Inputs (White wires) |
|-------------------------|
| #1: None |
| #2: 2-step |
| #3: A/C button |
| #4: Oil pressure |
| #5: Engine temp. |
| #6: Fuel pressure |
| #7: Air temperature |
| #8: None |
| #9: None |
| #10: None |
| #11: TPS |
| #12: Turbo speed RPM #1 |
| #13: Turbo speed RPM #2 |
| #14: None |
| #15: None |
| #16: None |
| #17: None |

☒ Input enabled

Import sensor

Channel name
Default name
Turbo speed RPM #1

Custom name
Turbo speed RPM #1

Dash name
Turbo speed RPM #1

Unit
RPM

Decimal places
0 (Min: -32000 Max: 32000)

Offset
Offset type
Disabled

Offset value
0

Turbo speed RPM 2

| Turbo speed RPM #1 | Turbo speed RPM #2 |
|-------------------------------------|-------------------------------------|
| Internal sensor signal divider 8 | Internal sensor signal divider 8 |
| Compressor blades count 14 | Compressor blades count 14 |

Specifications

| | |
|----------------------|---------------------|
| Supply voltage: | 5V DC |
| Operating temp.: | -40 °C up to 200 °C |
| Max torque: | 9 Nm |
| Current consumption: | 10 mA without load |

Distributed for:

FuelTech USA.

455 Willbanks Dr.

Ball Ground, GA 30107

Phone: 678-493-3835

support@fueltech.net

www.fueltech.net